

REVISIONS			
NO	DESCRIPTION	APPROVED	DATE

Impedance.....50Ω
 Frequency range.....DC ~ 18GHz
 V.S.W.R.....3GHz : ≤1.03
 6GHz : ≤1.05

Dielectric withstanding

– Voltage(at sea level).....1000Vrms.50Hz
 – Working voltage(at sea level).....≤325Vrms.50Hz

Insulation resistance.....≥5.10³ MΩ

Center contact resistance.....≤3MΩ

Out contact resistance.....≥2MΩ

Temperature range.....-65°C ~ +165°C

Temperature shock.....MIL-STD202,Method107,ConditionB

Moisture resistance.....MIL-STD202,Method106

Corrosion.....Saltspray Test acc. to MIL-STD-202, Method101,ConditionB

Vibration.....MIL-STD202,Method204,ConditionD

Shock.....MIL-STD202,Method203,ConditionI

Couling nut torque

– Recommended torque....1.0Nm/8.9in.-lbs

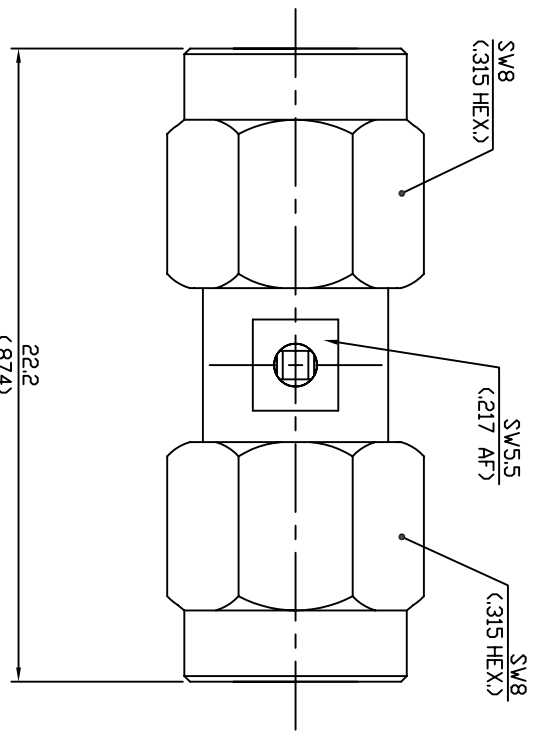
– Couling prodtorque.....1.7Nm/15.0in.-lbs

Coupling retention force.....≤270N/60.7lbs.

Contact capivation.....≥27N/6.1lbs.

Durability(Matings).....≥500

Connector parts	Material	Plating
Bodys	Brass	Gold
Center contact	Beryllium-copper	Gold
Insulator	PTFE	White



DATE	
DRAWN BY	
DESINGNED BY	
CHECKED BY	
APPD.BY	
SCALE 1 : 1	



TITLE
**SMA STRAIGHT ADAPTOR
 PLUG TO PLUG**

SIZE DRAWING NO
R330-080

UNIT	mm		
SCALE	1 : 1		

TOL. UNLESS NOTED
 X = ±0.1
 X.X = ±0.05
 X.XX = ±0.01

