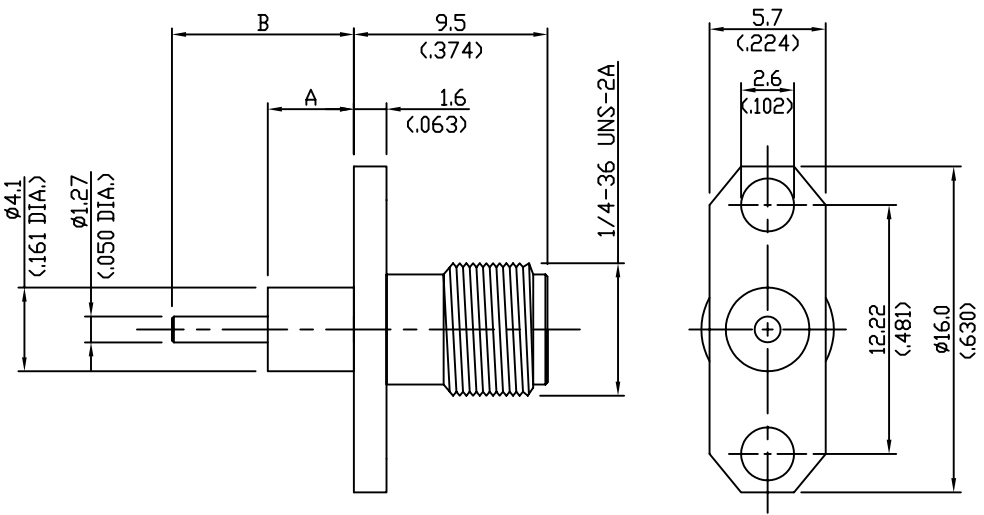


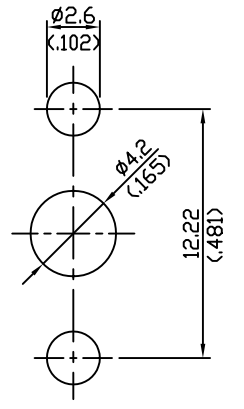
REVISIONS			
NO	DESCRIPTION	APPROVED	DATE

- Impedance.....50Ω
- Frequency range.....DC ~ 18GHz
- V.S.W.R.....N/A
- Dielectric withstanding
 - Voltage(at sea level).....1000Vrms.50Hz
 - Working voltage(at sea level).....≤325Vrms.50Hz
- Insulation resistance.....≥5.10³MΩ
- Center contact resistance.....≤3MΩ
- Out contact resistance.....≥2MΩ
- Temperature range.....-65°C ~ +165°C
- Temperature shock.....MIL-STD202,Method107,ConditionB
- Moisture resistance.....MIL-STD202,Method106
- Corrosion.....Saltspray Test acc.to MIL-STD-202,
Method101,ConditionB
- Vibration.....MIL-STD202,Method204,ConditionD
- Shock.....MIL-STD202,Method203,ConditionI
- Contact captivation.....≥27N/6.1lbs.
- Durability(Matings).....≥500

Connector parts	Material	Plating
Bodys	Brass	Gold
Center contact	Beryllium-copper	Gold
Insulator	PTFE	White



Mounting hole



TOL.UNLESS NOTED
 X = ±0.1
 X.X = ±0.05
 X.XX = ±0.01

DATE	
DRAWN BY	
DESIGNED BY	
CHECKED BY	
APPD.BY	
SCALE 1 : 1	UNIT mm

RFAC Solutions www.rfacsolutions.com

TITLE SMA PANEL
PLUG (Fig1)

DRAWING NO R330-060-000

SHEET 1 OF 1