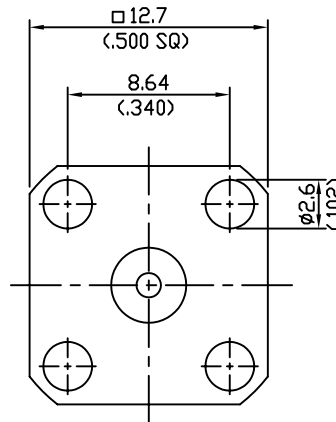
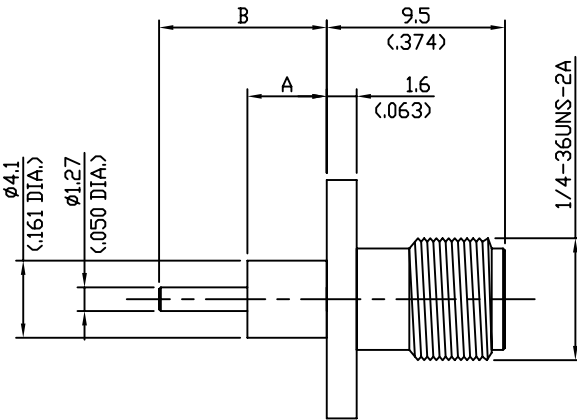


REVISIONS

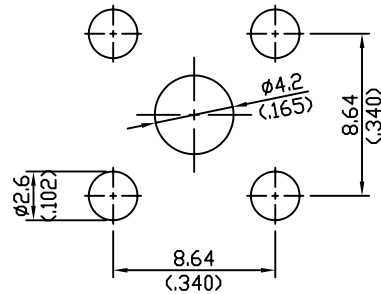
NO	DESCRIPTION	APPROVED	DATE

- Impedance.....50Ω
- Frequency range.....DC ~ 18GHz
- V.S.W.R.....N/A
- Dielectric withstanding
 - Voltage(at sea level).....1000Vrms.50Hz
 - Working voltage(at sea level)..... ≤325Vrms.50Hz
- Insulation resistance..... ≥5.10³ MΩ
- Center contact resistance..... ≤3MΩ
- Out contact resistance..... ≥2MΩ
- Temperature range..... -65℃ ~ +165℃
- Temperature shock.....MIL-STD202, Method107, ConditionB
- Moisture resistance.....MIL-STD202, Method106
- Corrosion.....Saltspray Test acc.to MIL-STD-202, Method101, ConditionB
- Vibration.....MIL-STD202, Method204, ConditionD
- Shock.....MIL-STD202, Method203, ConditionI
- Contact captivation..... ≥27N/6.1lbs.
- Durability(Matings)..... ≥500

Connector parts	Material	Plating
Body's	Brass	Gold
Center contact	Beryllium-copper	Gold
Insulator	PTFE	White



Mounting hole



TOL.UNLESS NOTED
 X = ±0.1
 X.X = ±0.05
 X.XX = ±0.01

DATE		
DRAWN BY		
DESIGNED BY		
CHECKED BY		
APPD. BY		
SCALE 1 : 1	UNIT mm	

www.rfacsolutions.com

TITLE	SMA PANEL PLUG (Fig2)
DRAWING NO	R330-064-000
SHEET	1 OF 1