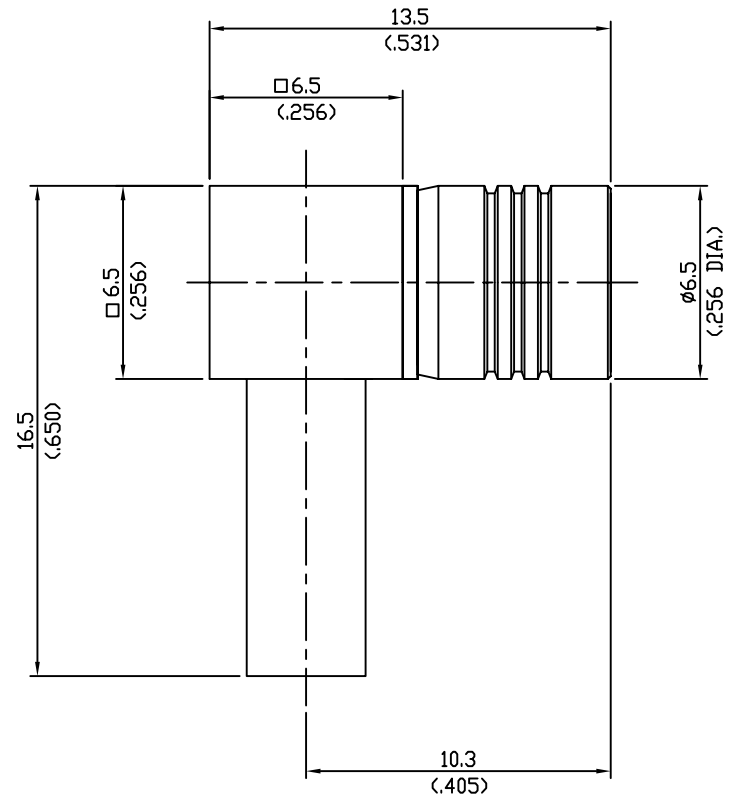


REVISIONS			
NO	DESCRIPTION	APPROVED	DATE




Impedance.....50Ω
 Frequency range.....DC ~ 4GHz
 V.S.W.R.....N/A
 Dielectric withstanding
 - Voltage(at sea level).....750Vrms.50Hz
 - Working voltage(at sea level).....≤250Vrms.50Hz
 Insulation resistance.....≥10⁴ MΩ
 Center contact resistance.....≤6MΩ
 Out contact resistance.....≥1MΩ
 Temperature range.....-65°C ~ +165°C
 Temperature shock.....MIL-STD202,Method107,ConditionC
 Moisture resistance.....MIL-STD202,Method106
 Corrosion.....Saltspray Test acc.to MIL-STD-202, Method101,ConditionB
 Vibration.....MIL-STD202,Method204,ConditionD
 Engagementforce.....8N-63N/1.8lbs.-14.2lbs.
 Diengagementforce.....8N-63N/1.8lbs.-14.2lbs.
 Contact captivation.....≥18N/4.0lbs.
 Durability(Matings).....≥500

Connector parts	Material	Plating
Bodys	Brass	Gold
Center contact	Beryllium-copper	Gold
Insulator	PTFE	White
Ferrule	Brass	Gold

TOL.UNLESS NOTED
 X = ±0.1
 X.X = ±0.05
 X.XX = ±0.01

DATE	
DRAWN BY	
DESIGNED BY	
CHECKED BY	
APPD.BY	
SCALE 1 : 1	UNIT mm


RFAC Solutions rfacsolutions.com

TITLE SMB RIGHT ANGLE PLUG (RG-174. 188. 316)

DRAWING NO R340-009-000

SHEET 1 OF 1

