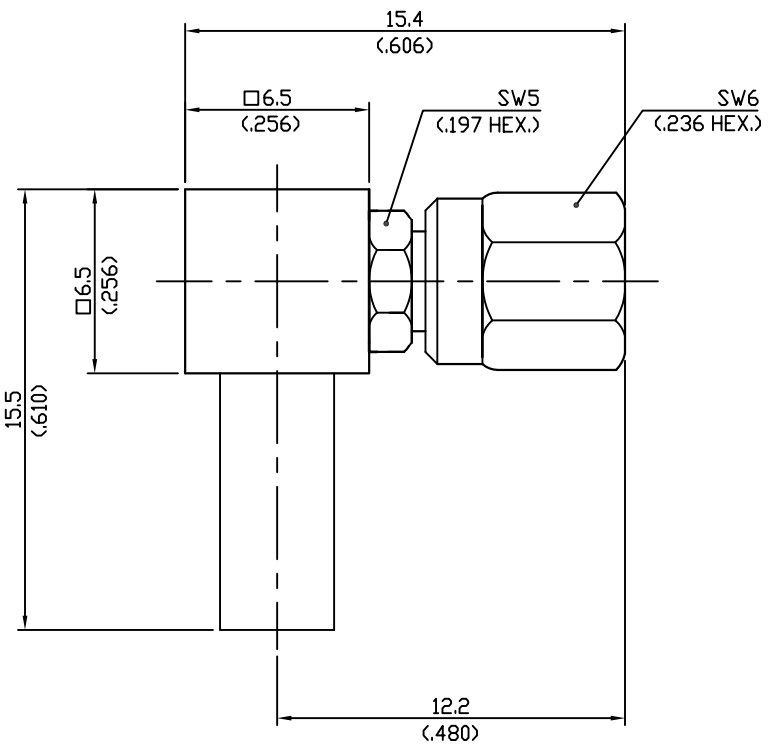


REVISIONS


NO	DESCRIPTION	APPROVED	DATE

- Impedance.....50Ω
- Frequency range.....DC ~ 10GHz
- V.S.W.R.....N/A
- Dielectric withstanding
 - Voltage(at sea level).....750Vrms.50Hz
 - Working voltage(at sea level)..... ≤250Vrms.50Hz
- Insulation resistance..... ≥ 10⁴ MΩ
- Center contact resistance..... ≤6MΩ
- Out contact resistance..... ≥1MΩ
- Temperature range.....-65℃ ~ +165℃
- Temperature shock.....MIL-STD202, Method107, ConditionC
- Moisture resistance.....MIL-STD202, Method106
- Corrosion.....Saltspray Test acc.to MIL-STD-202, Method101, ConditionB
- Vibration.....MIL-STD202, Method204, ConditionD
- Couling nut torque
 - Recommended torque....25Ncm~35Ncm/2.2in.-lbs~3.1in.-lbs
 - Couling prddf torque.....71Ncm/36.0in.-lbs
- Coupling retention force..... ≥160N/36.0lbs
- Contact captivation..... ≥18N/4.0lbs
- Durability(Matings)..... ≥500

Connector parts	Material	Plating
Bodys	Brass	Gold
Cente contact	Beryllium-copper	Gold
Insulator	PTFE	White
Ferrule	Brass	Gold



TOL.UNLESS NOTED
 X = ±0.1
 X.X = ±0.05
 X.XX = ±0.01

DATE		 RFAC Solutions www.rfacsolutions.com
DRAWN BY		
DESIGNED BY		TITLE SMC RIGHT ANGLE PLUG (RG-174. 188. 316)
CHECKED BY		DRAWING NO R350-008-000
APPD.BY		
SCALE 1 : 1	UNIT mm	SHEET 1 OF 1